



**PLATINUM  
HORTICULTURE**

# 820W

## Horticulture Light



# LED Reno

## Retrofit 1:1 HPS replacement

|   |   |
|---|---|
| IMPORTANT SAFETY PRECAUTIONS & EXPLANATION OF SYMBOLS ..... | 2 |
| BEST PRACTICES .....  | 2 |
| GENERAL CARE .....  | 3 |
| SYSTEM HARDWARE .....                                       | 5 |
| ACCESSORIES & WARNING .....                                 | 6 |
| TECHNICAL SPECIFICATIONS .....                              | 7 |

## IMPORTANT SAFETY PRECAUTIONS & EXPLANATION OF SYMBOLS

- Please read this manual thoroughly before attempting to install or operate any LED Reno system.
- After successful installation and configuration of the system, be sure to retain this manual in a safe place for future reference. Safety is a key component to a long lasting and trouble-free installation.
- It is important you read, fully understand, and observe the subsequent safety precautions. If you are not comfortable with the installation of high performance lighting systems, you should seek the services of a qualified installation professional or call us for help.
- **NOTICE:** The LED are high-performance lighting systems. Do not touch while in operation.
- Connect the system only to the power sources of the appropriate voltage using the AC plug type received. Protect power cables from being pinched, walked on, or otherwise damaged. Be especially careful where the power cable enters the power outlet and the unit. Only connect the system to an electrical outlet or extension cord of appropriate type and rating. Connect the system only to the power sources of the correct voltage using the plug received.
- **DO NOT** defeat the safety purpose of a grounding or polarized plug by removing ground pins or using unsafe adapters. A polarized plug has two blades –one wider than the other. A grounding plug has a third ground prong in addition to the two main conductors. The wide blade or third grounding prong is provided for your safety. If the provided plug does not fit your outlet, consult an electrician to replace your obsolete outlet. If you replace the power cord, only use one of similar type and equal or greater current rating.

## CULTIVATION BEST PRACTICES

Encourages everyone to experiment and pursue their own techniques. Every crop is different and everyone has different goals. However, our internal research has given us insight into several strategies we would like to share.

- Regularly check your plants' growth and health. LED Reno lighting systems deliver high levels of PAR, typically more than experienced in nature. Adjustments to H2O, CO2, RH, nutrients, and temperature are typically required.
- Mount the fixture at least 6" from the top of your canopy to ensure optimal uniformity and consistent PPF. The LED Series was designed to provide uniform light dispersion and requires precise deployment.
- Many plants prefer higher temperatures when exposed to high PPF. Experiment with higher temperatures to achieve higher yields. Canopy temperature and room ambient temperature often vary. For accurate results, test at the canopy level to gauge leaf surface temperature.

## GENERAL CARE

LED Series systems are passively cooled with zero moving components. They are designed for harsh environments and years of maintenance-free performance. Some basic care will keep your system operating at peak performance cycle-after-cycle.

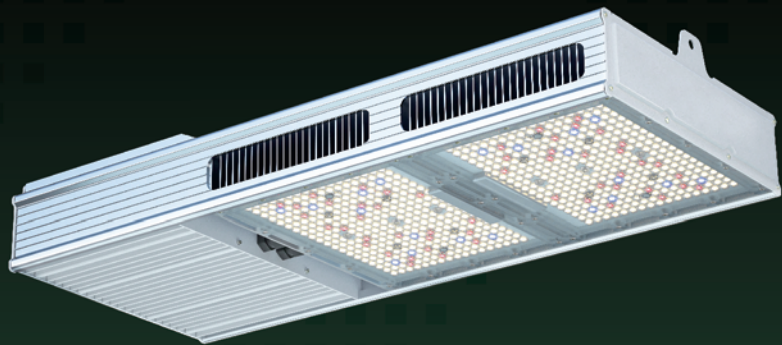
- Natural convection removes heat away from the heatsink. In order for the system to properly cool itself, at least one inch of space is required between the console and the roof of your grow area. Failure to do so may shorten the fixture's lifespan.
- To achieve the optimal lifespan and performance of your fixtures, routinely check for and remove excess dust, debris, and mineral build up from heatsink and LED array. Cleaning should always be done with the fixture unplugged from its power source using low-pressure compressed air or water to rinse away dirt from light bars.
- Never use a cloth to clean the diode array. Doing so can scratch or compromise the integrity of the silicon seal, or dislodge diodes entirely.
- To limit degradation, avoid touching the diodes with your hands, even in a powered off state.






LED solutions are high-performance lighting systems. Do not touch while in operation. Last and most important, please recycle all packaging material. Future generations will thank you.



Impressive 2000  $\mu\text{mol/s}$  output for more crop-loving light at up to 20% energy savings vs. 1000 W DE HPS fixtures (based on average wattage of each fixture)



-  **Warm White LED**  
Boosts plants blooms, makes flower bigger and vivid.
-  **BLUE light**  
Promotes plants germination, increasing the growth rate of plants.
-  **RED LED**  
Yields more leaves and crops when combined with blue light.

Dimming Switch:  
330W / 500W / 650W / 820W / EXT

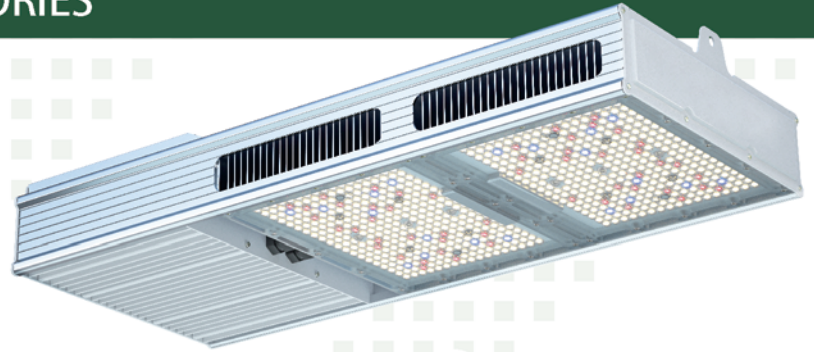
Rj14 port for 0-10v connection to compatible controllers



## SYSTEM HARDWARE & ACCESSORIES

Pre-Configured With:

- A. LED Reno fixture
- B. External RJ14 Network cable
- C. Input Power Cable
- D. 1/8" Rope Ratchet x4



A



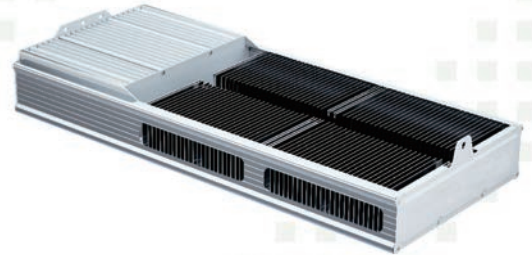
B



C



D



# TECHNICAL SPECIFICATIONS

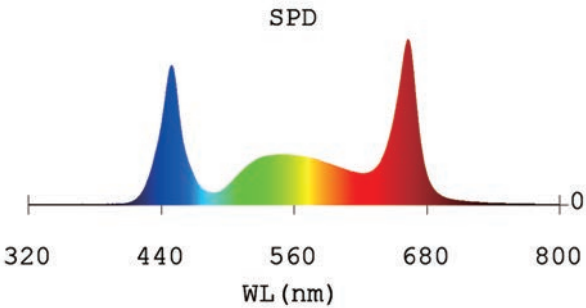
| Model    | Input Power | Input Voltage        | Spectrum             | AC Power Cord | AC Plug                           | Mounting Hardware |
|----------|-------------|----------------------|----------------------|---------------|-----------------------------------|-------------------|
| LED Reno | 820W        | 120-277V<br>277-480V | PhysioSpec<br>Indoor | 10Ft<br>(3M)  | NEMA 5-15P<br>(UK / EU / AU / IT) | 1/8" Rope Ratchet |

### Photosynthetic Photon Flux (PPF)

LED Reno 2000  $\mu\text{mol/s}$

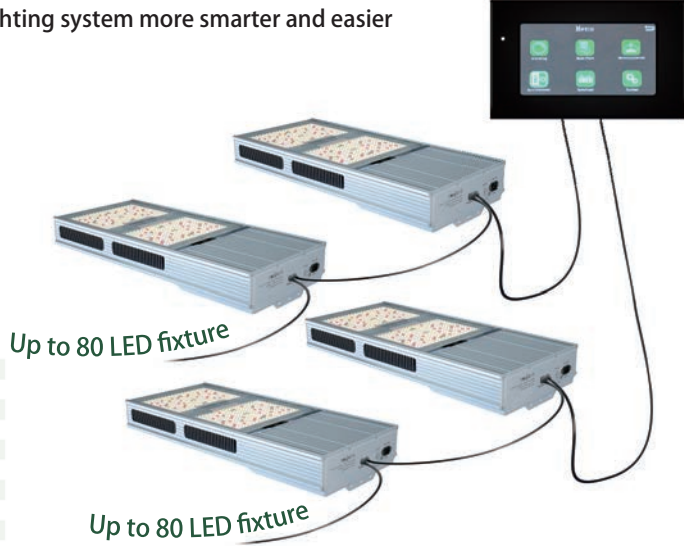
### Photosynthetic Photon Efficacy (PPE)

LED Reno 2.5  $\mu\text{mol/J}$

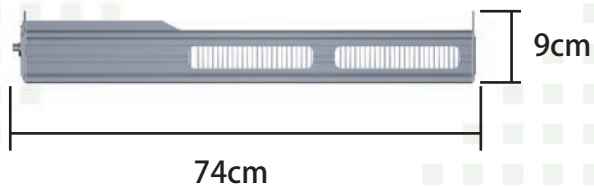


### SMART CONTROL SYSTEM

0-10V dimming feature can make your lighting system more smarter and easier



## Fixture Dimensions



### **WARNING**

Risk of electrical shock. To reduce the possibility of serious injury, always take the proper precautions and unplug the fixture before moving or cleaning.

### **WARNING**

Fixture and power supply are UL 1598 Wet Location rated but are not designed to be submerged in water. In the event that the module or power supply enclosure becomes submersed, first disengage the circuit breaker, then unplug submersed components before proceeding to remove from water.

### **CAUTION**

To prevent eye damage, avoid looking directly at the unshielded LEDs.

### **CAUTION**

LED and heat sink surfaces may be hot. Allow sufficient cooling time before handling.

### **CAUTION**

To reduce the risk of overheating or fire, never place operating fixtures face down on a flush surface. Always allow for adequate ventilation of fixtures and power supplies.





**PLATINUM**  
HORTICULTURE

FIND MORE HARVEST,  
FIND OUR PROFESSIONAL LED  
HORTICULTURAL LIGHTING SERIES

La Nucia Spain

Telephone number: +34 965 082 760

